



# Landscape Wall Hanging

## OVERVIEW

Both Sara Bowen and Vincent van Gogh love nature. Van Gogh believed that to be a true artist, you must connect with nature. During this activity we will create our own landscape drawing by using the same painterly style as van Gogh. Students will also use plant and landscape references to create their artwork. Then, students will weave their drawing onto a bamboo frame inspired by *The Witch Doctor's Chapel* by Sara Bowen.

## STANDARDS

### ESSENTIAL QUESTION

How can nature help artists create?

### STUDENT LEARNING OBJECTIVES

Students Will:

- Use art vocabulary while creating art.
- explore different media while creating art.

## STANDARDS

### 3rd Grade

- 2 Demonstrate skills using available resources, tools, and technologies to investigate personal ideas through the art-making process.
- 3. Describe and use steps of the art-making process while creating works of art/design
- 6. Refine artwork in progress by adding details to enhance emerging meaning.
- 12. Interpret art by analyzing use of media to create subject matter, visual qualities, and mood/feeling.
- 13. Use learned vocabulary to evaluate artwork based on given criteria

### 4th Grade

- 3. Generate ideas and employ a variety of strategies and techniques to create a work of art/design.
- 10. Compare responses to a work of art before and after working in similar media.
- 13. Apply one criterion from elements or principles of design to evaluate more than one work of art/design.

### 5th Grade

- 10. Compare one's interpretation of a work of art with the interpretation of others.
- 15. Identify how works of art/design are used to inform or change beliefs, values, or behaviors of an individual or society.

### 6th Grade

- 15. Analyze how art reflects changing societal and cultural traditions.

## ART DISCUSSION

### DISCUSSION PROMPTS

- Define ceramics
- Define impasto
- Discuss Post impressionism

## ABOUT THE ARTIST

Sara Bowen is a potter from South Alabama, creating functional pots inspired by her natural surroundings, favorite flora, and the feminine form. Her ceramic installation and gallery work focuses on creating other-worldly spaces, often featuring light, fiber, and poetry. Bowen's recent installation, "The Witch Doctor's Chapel," debuted along with her first book of poetry, "The Witch Doctor's Hymnal," both of which focus on healing and reconciling uncomfortable truths and childhood trauma.

B.A. in Art History from Birmingham-Southern College. Bowen's interest with ceramic pottery goes beyond simple aesthetics, deep into the history of useful objects throughout the centuries. Although her interest in throwing unformed clay into pots, bowls, planters, and vases began in high school, it was her college education that unlocked her understanding that functional art objects carry the stories of those who once used them far into the future.

Vincent van Gogh (March 30, 1853 - July 29, 1890) was born on 30 March 1853 in Zundert, a village in the southern province of North Brabant. When Van Gogh decided to become an artist, he was shocked at his extraordinary gifts. His evolution from an amateur to a truly original master was remarkably rapid. He had an exceptional feel for bold, harmonious color effects, and an infallible instinct for choosing simple but memorable compositions. Vincent van Gogh was a dutch post-impressionist painter who became one of the most famous and influential artists in art history, after death.

Both Sara Bowen and Vincent van Gogh share a love for nature. Bowen grew up surrounded by nature. She also recieved the nickname 'River Rat' because of her love for the outdoors. Gogh spent his childhood on the countryside. He saw nature and art as inseparably linked. Nowhere did he find as much inspiration, peace and solace as in nature.

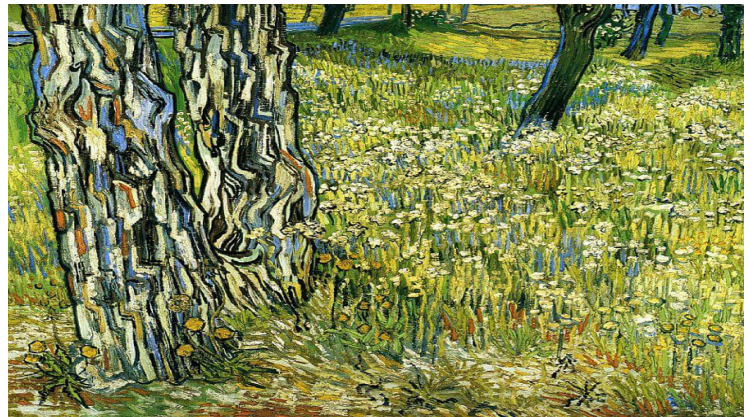
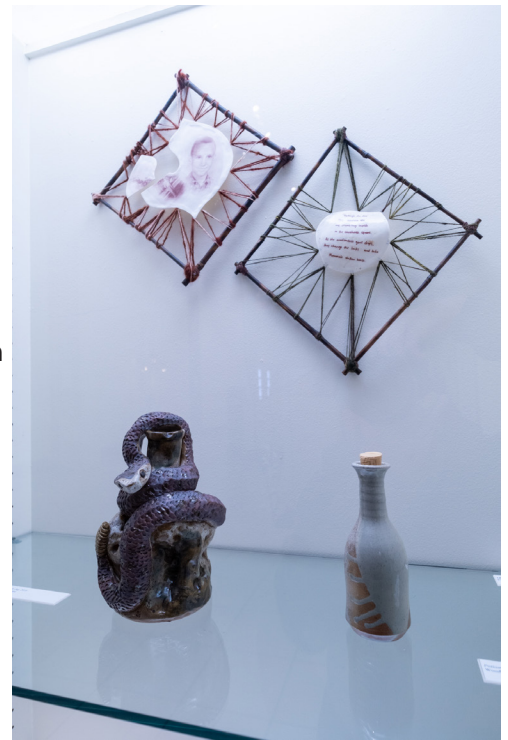
Vincent van Gogh once stated , *'...if I felt no love for nature and my work, then I would be unhappy.'*

## CURRICULUM CONTENT

### LEARN ABOUT THE WITCH DOCTOR'S CHAPEL AND TREE TRUNKS IN THE GRASS

The Witch Doctor's Chapel was created by artist Sara Bowen to reconcile and honor complicated feelings about her late mother and the traumas of her Southern childhood. It's a space for healing, holding conflicting truths in one space, and ultimately celebrating resilience

and broken parts. She began this installation with the goal of creating a magical space in the vein of the medieval chapels she studied as an art history student. As she mixed materials like silk and porcelain with light, the feeling persisted that she needed something more to create the magic she was seeking. Meanwhile, Bowen was writing poems to process her childhood, grief, and difficult relationship with her mother, and along the way the poems and installation merged.



Vincent van Gogh created *Tree Trunks in the Grass* while at an asylum called Saint-Remy. Gogh believed that because of this painting he still had hope and ambition despite his stay at the dreary asylum. The pine trees in the foreground highlight the striking colors and dominance of the scene which leaves a highly decorative effect, achieved partly by the lack of strident tonal and colour contrasts.

# Landscape Wall Hanging

## ART INSTRUCTION

### MATERIALS

6x6 mixed media paper, oil pastels, 4 bamboo skewer, yarn, single hole puncher, pencils, scissors

### INSTRUCTIONS

**1**

Create your bamboo frame by gluing the ends of the skewers together.

- Also hole punch 5 holes on all four sides of the 6x6 paper

**2**

Using oil pastels, draw a landscape inspired by Vincent van Gogh's *Tree Trunks in the Grass* (1980)

- Imitate Gogh's impasto style by creating hatching movements with oil pastels

**3**

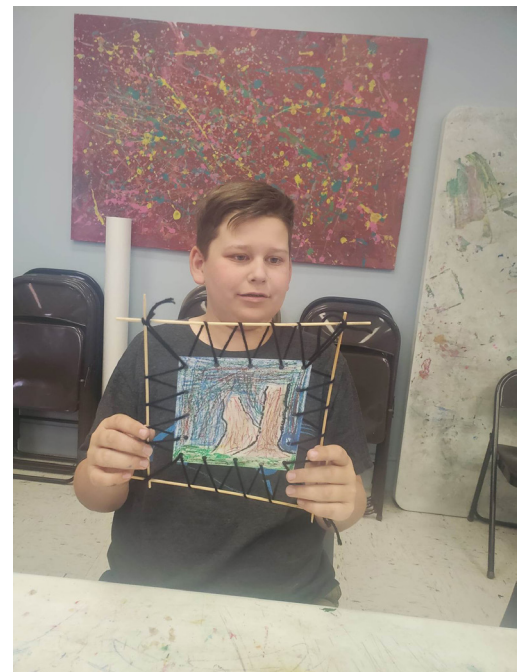
Attach paper to frame

- Tie the end of yarn to the corners of the bamboo frame
- pull yarn through the holes of the paper then wrap yarn around bamboo frame. Continue this step until the frame is completed.
- NOTE: In order for your drawing to be tightly centered into the frame, make sure when wrapping the yarn around the frame that the yarn is 2 inches away from the frame

**4**

Once finished with framing, write poem on the back of your drawing.

- OPTIONAL: Teachers can tie the frames together and create a Sara Bowen inspired Chapel. Teachers can also hang them onto a wall or cieling.





## TERMS

**POST IMPRESSIONISM**- an era that responded to the neglect of naturalistic lighting in art. Allowed artists to depict the observed world by using memories and emotions to create art.

**CERAMICS**- generally made by taking mixtures of clay, earthen elements, powders, and water and shaping them into desired forms. Once the ceramic has been shaped, it is fired in a high temperature oven known as a kiln.

**IMPASTO**- Very thick layers of paint, that the brush strokes are usually visible on a surfaceamet dolori atur amusto experchit et rerspiti quia non prat hicium que dolupis as modi odis secuptas alitium id que velluptata nis estis esti omnis ut vollest labo.

## EXPAND

### USE QR CODE FOR GUIDE ACTIVITY VIDEOS

Follow our youtube at [wiregrassmuseumofart7239](https://www.youtube.com/wiregrassmuseumofart7239)

